



Scan to see our inventory.

Need information on price, floor plans, and availability of homes in our community? Scan the QR code for an updated inventory list. You'll find photos, floor plan descriptions, prices, and more. We're excited to help you call Woods in Noble home.



THE WOODS AT NOBLE

Exterior Design

- 30 year high quality shingles
- Lighted front porch and back patio
- Coach light at garage door (per plan)
- Raised panel fiberglass insulated front door with
- Brushed nickel hardware
- Professional Landscaping per CCRs and City requirements
- Front and back sod

Gourmet Kitchen

- 36" Quality kitchen cabinets with hidden hinges and crown molding on cabinets
- Whirlpool® Stainless Steel Appliances
- Quality chrome faucet with spray nozzle
- Solid surface counter tops with 4" backsplash and stainless steel sink
- 1/3 hp garbage disposal

Primary Bedroom Ensuite

- 36x60 shower
- Designer marble vanity tops
- Designer chrome faucets and plumbing fixtures
- Mirror over vanity
- Built-in linen shelves (per plan)
- Enclosed water closet with elongated toilet
- Glass shower surround

Secondary Bath

- Designer marble vanity tops
- Tub/shower combo
- Designer chrome faucets and plumbing fixtures
- Mirror over vanity
- Built-in linen shelves (per plan)
- Elongated toilets

Distinctive Interiors

- Sherwin Williams® designer paint
- Mohawk® carpet with 3/8" pad in Bedrooms, staircase and upstairs common areas
- Luxury Vinyl Plank flooring in downstairs common areas and all wet areas.
- Spacious walk in closets (per plan)
- Smoke detector/CO2 monitor with battery back up
- Full size washer/dryer connections
- 5 panel interior doors with brushed nickel hardware
- Phone and TV connections per plan
- Energy efficient LED ceiling mounted lights throughout
- Attic pull down stairs, one access (per plan)
- Open storage over washer and dryer

Energy Saving Features

- 16 SEER Puron energy efficient heating/cooling system
- Zoned heating/cooling (where applicable)
- Low E dual pane vinyl windows filled with Argon gas
- Insulation package includes blown insulation R-15 exterior walls, R-30 sloped ceilings, R-38 in attic
- Polysealant anti-draft protection at windows, doors, and plate penetration
- Rinnai® Tankless Water Heater
- Passive roof and soffit ventilation

Optional Features

- Whirlpool® Top load washer/dryer
- Whirlpool® slide in stainless steel refrigerator
- 1/3 hp Lift Master® smart garage door
- Front or Full gutters
- Blinds
- Garage door opener
- Ceiling fans (option for family room, bedrooms only)
- Outdoor irrigation system
- 6 ft fencing
- 6-8 man storm shelter

The Woods at Noble - Noble
405.594.5460

DRHORTON.COM/OKLAHOMA/OKLAHOMA-CITY

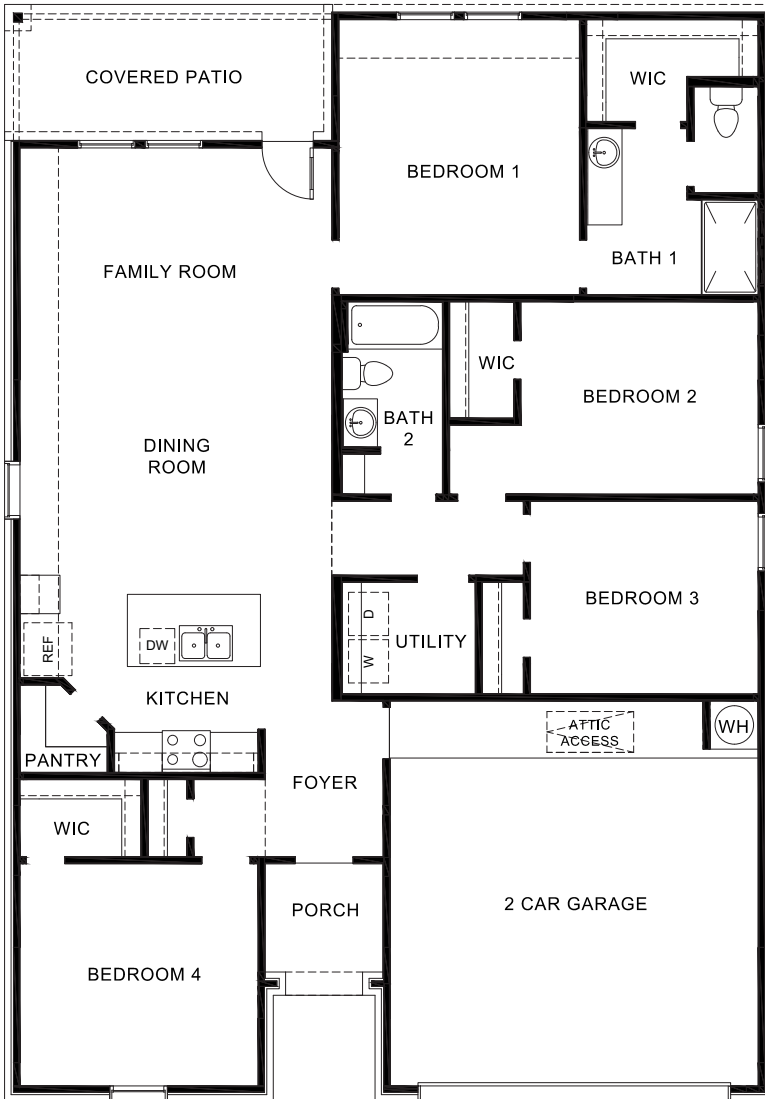
Home and community information, including pricing, included features, terms, availability and amenities, are subject to change and prior sale at any time without notice or obligation. Pictures, photographs, colors, features, and sizes are for illustration purposes only and will vary from the homes as built. Square footage dimensions are approximate. Buyer should conduct his or her own investigation of the present and future availability of school districts and school assignments. D.R. Horton has no control or responsibility for any changes to school districts or school assignments should they occur in the future.



Elevation A



Elevation B



FIRST FLOOR PLAN

Home and community information, including pricing, included features, terms, availability and amenities, are subject to change and prior sale at any time without notice or obligation. Pictures, photographs, colors, features, and sizes are for illustration purposes only and will vary from the homes as built. Square footage dimensions are approximate. Buyer should conduct his or her own investigation of the present and future availability of school district and school assignments. D.R. Horton has no control or responsibility for any changes to school districts or school assignments should they occur in the future.

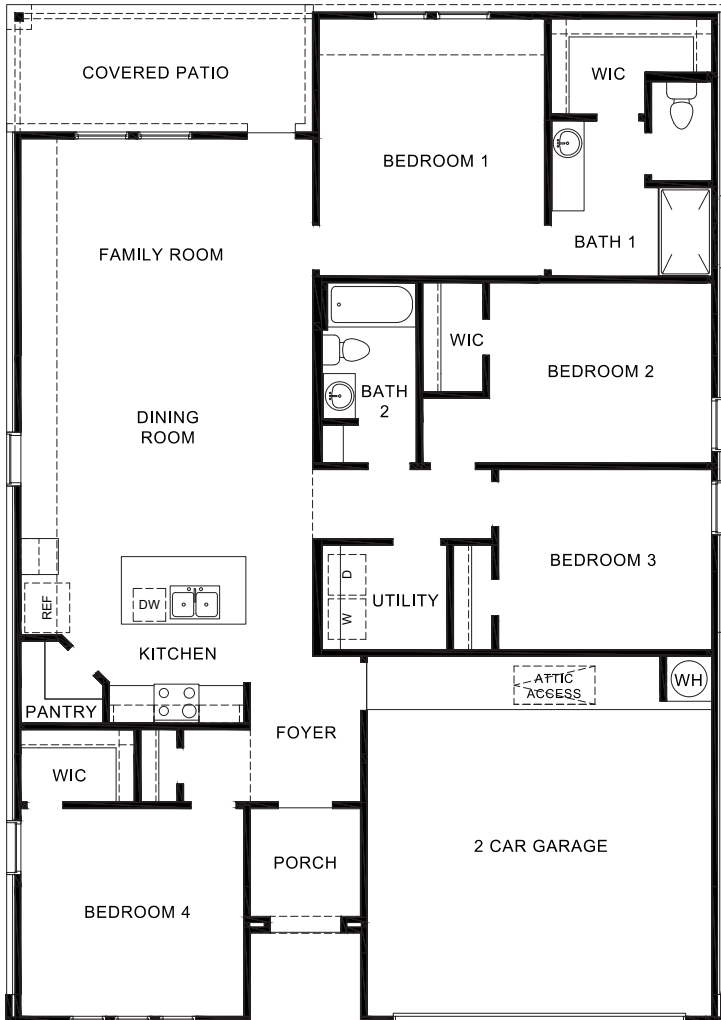




Elevation F



Elevation F w/Optional Brick



FIRST FLOOR PLAN

Home and community information, including pricing, included features, terms, availability and amenities, are subject to change and prior sale at any time without notice or obligation. Pictures, photographs, colors, features, and sizes are for illustration purposes only and will vary from the homes as built. Square footage dimensions are approximate. Buyer should conduct his or her own investigation of the present and future availability of school district and school assignments. D.R. Horton has no control or responsibility for any changes to school districts or school assignments should they occur in the future.

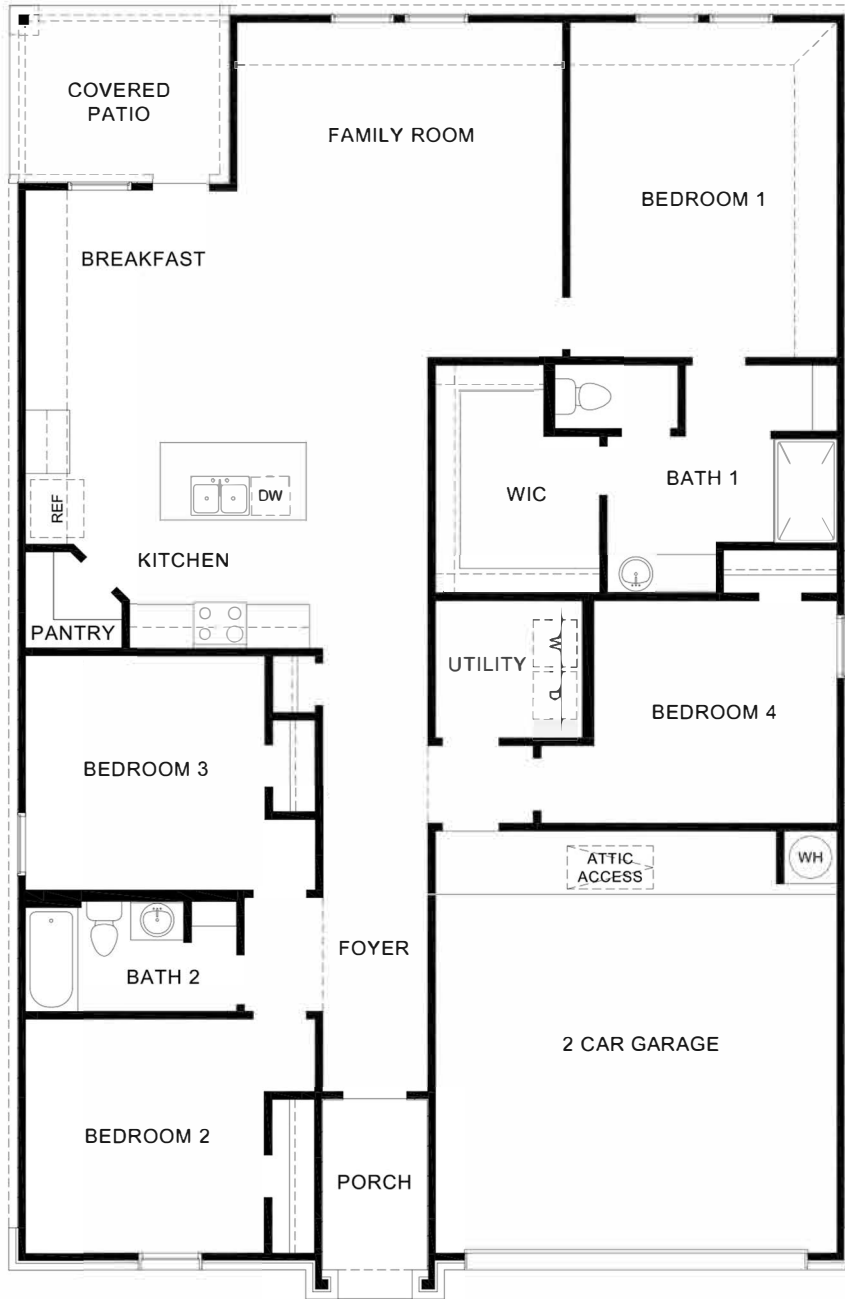




Elevation A



Elevation B



FIRST FLOOR PLAN

Home and community information, including pricing, included features, terms, availability and amenities, are subject to change and prior sale at any time without notice or obligation. Pictures, photographs, colors, features, and sizes are for illustration purposes only and will vary from the homes as built. Square footage dimensions are approximate. Buyer should conduct his or her own investigation of the present and future availability of school district and school assignments. D.R. Horton has no control or responsibility for any changes to school districts or school assignments should they occur in the future.

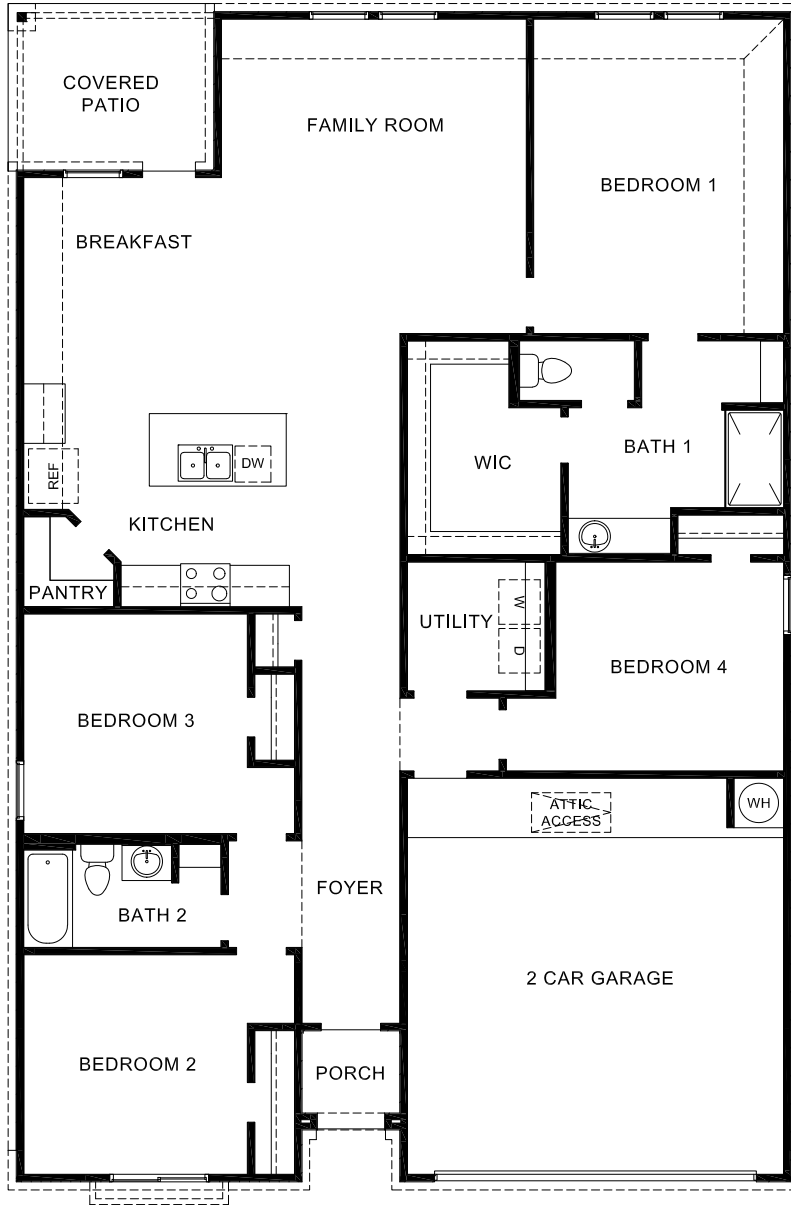




Elevation F



Elevation F w/Optional Brick



FIRST FLOOR PLAN

Home and community information, including pricing, included features, terms, availability and amenities, are subject to change and prior sale at any time without notice or obligation. Pictures, photographs, colors, features, and sizes are for illustration purposes only and will vary from the homes as built. Square footage dimensions are approximate. Buyer should conduct his or her own investigation of the present and future availability of school district and school assignments. D.R. Horton has no control or responsibility for any changes to school districts or school assignments should they occur in the future.

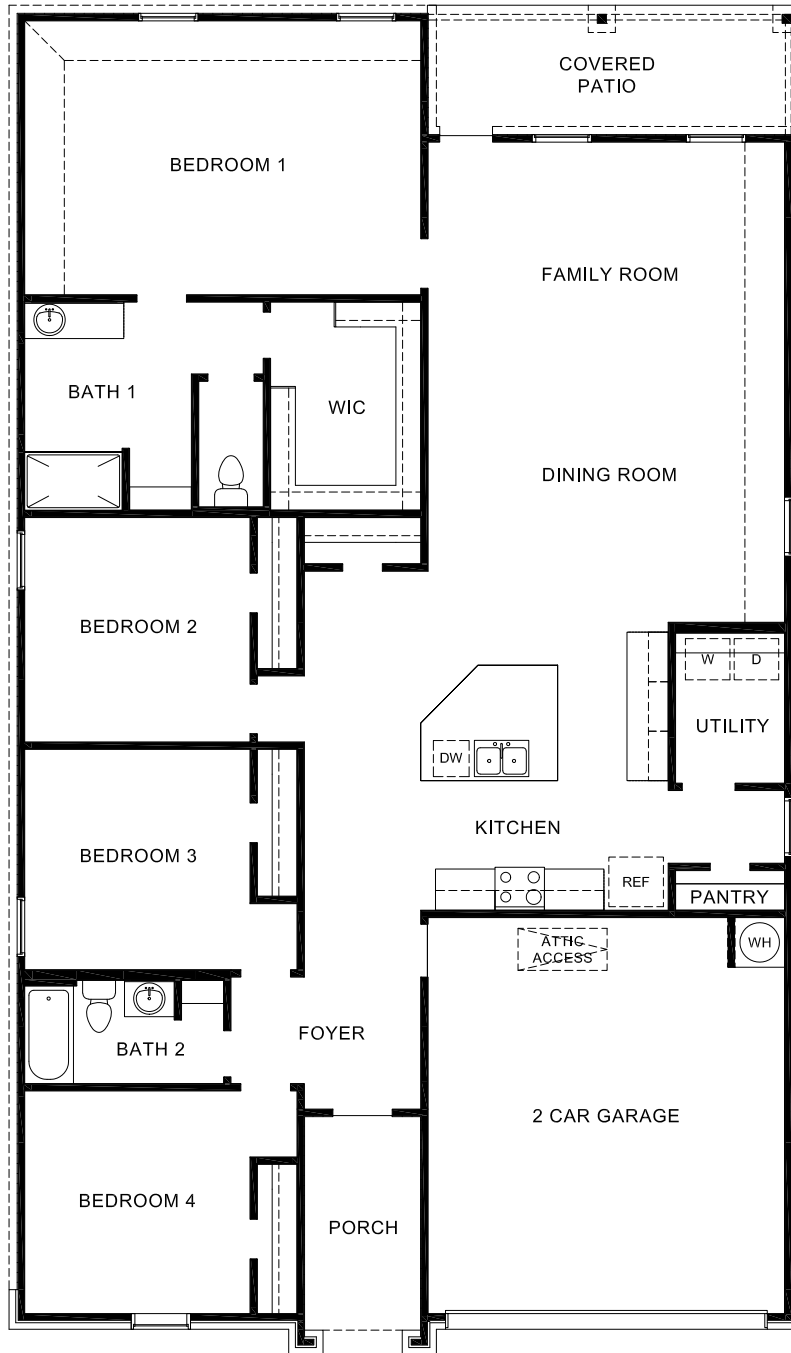




Elevation A



Elevation B



FIRST FLOOR PLAN

Home and community information, including pricing, included features, terms, availability and amenities, are subject to change and prior sale at any time without notice or obligation. Pictures, photographs, colors, features, and sizes are for illustration purposes only and will vary from the homes as built. Square footage dimensions are approximate. Buyer should conduct his or her own investigation of the present and future availability of school district and school assignments. D.R. Horton has no control or responsibility for any changes to school districts or school assignments should they occur in the future.

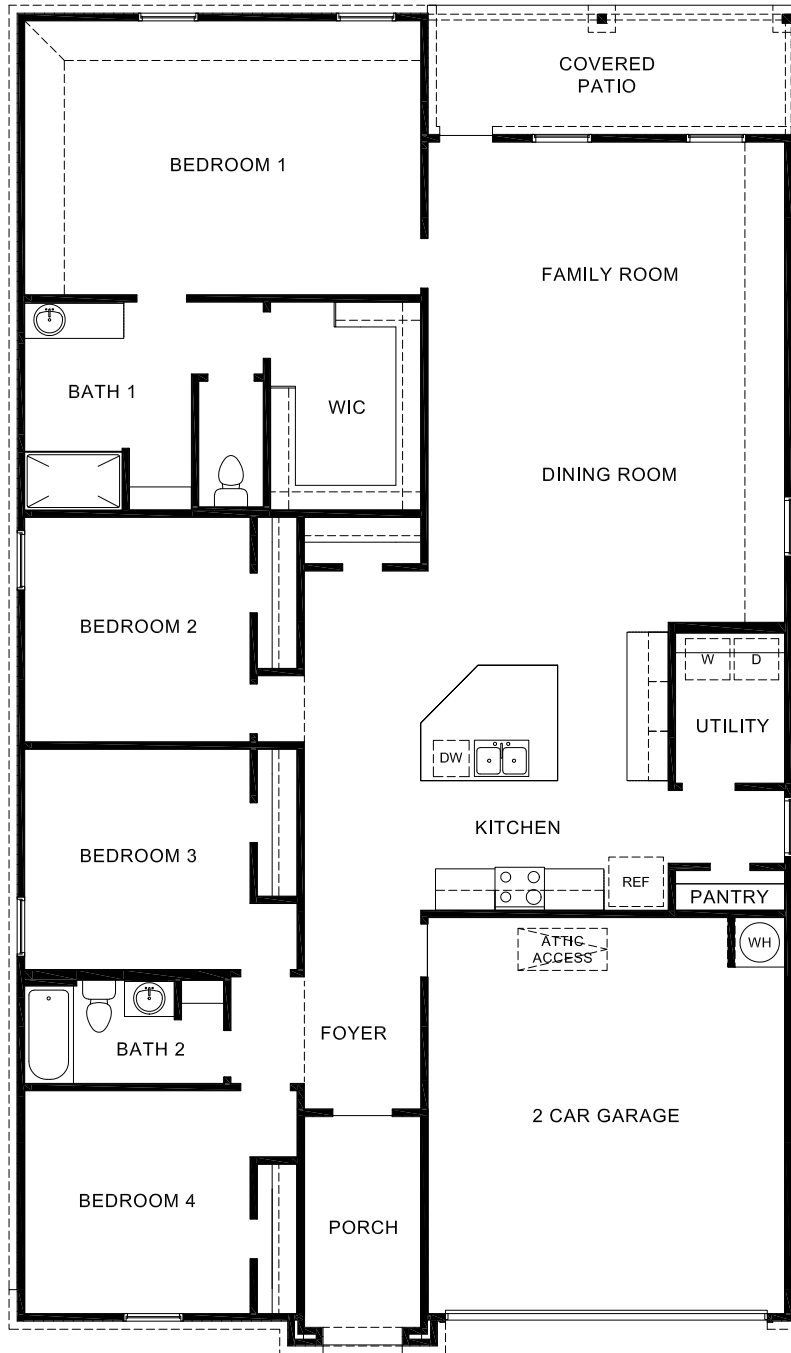




Elevation F



Elevation F w/ Optional Brick



FIRST FLOOR PLAN

Home and community information, including pricing, included features, terms, availability and amenities, are subject to change and prior sale at any time without notice or obligation. Pictures, photographs, colors, features, and sizes are for illustration purposes only and will vary from the homes as built. Square footage dimensions are approximate. Buyer should conduct his or her own investigation of the present and future availability of school district and school assignments. D.R. Horton has no control or responsibility for any changes to school districts or school assignments should they occur in the future.

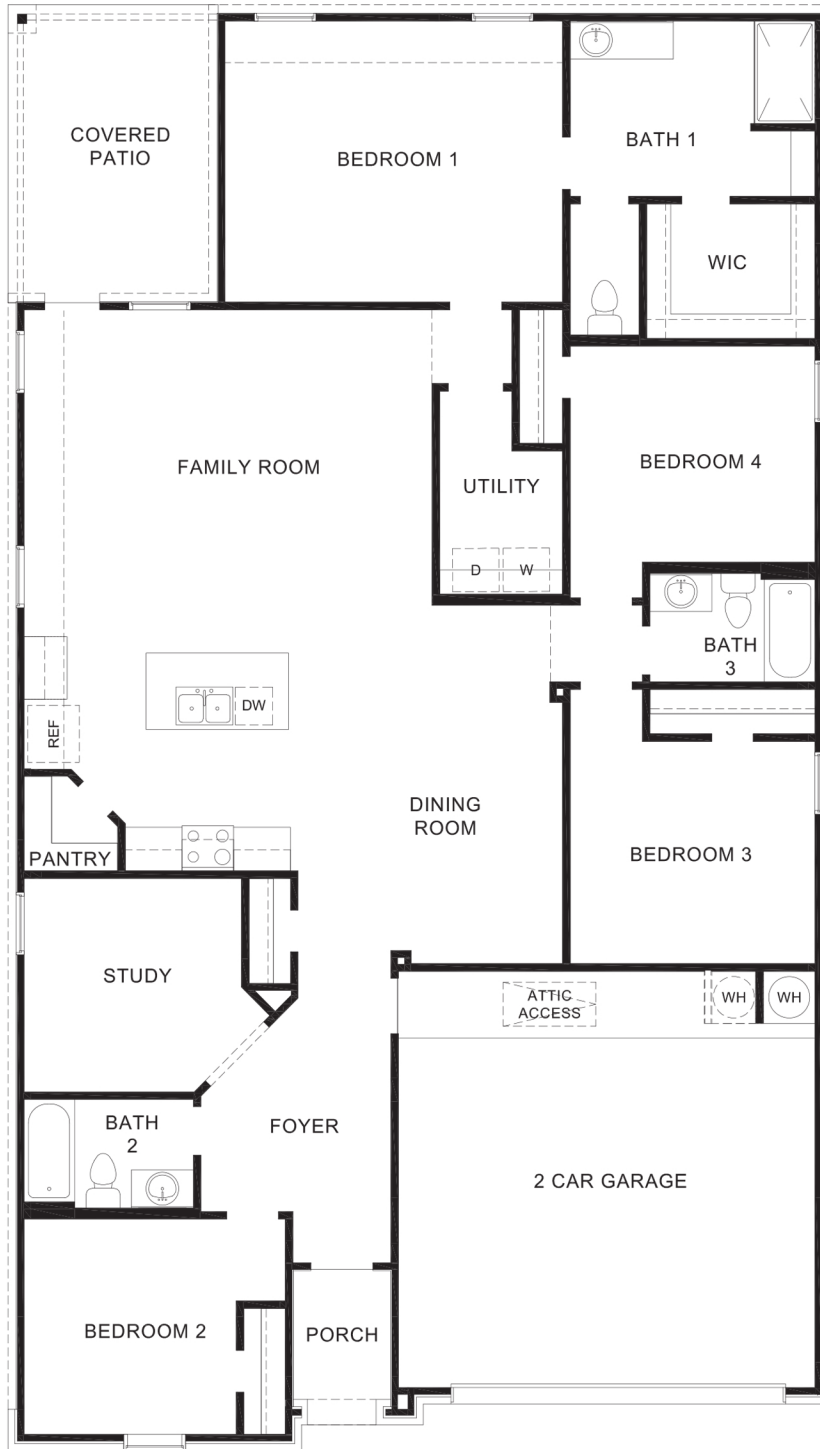




Elevation A/O



Elevation B/P



FIRST FLOOR PLAN

Home and community information, including pricing, included features, terms, availability and amenities, are subject to change and prior sale at any time without notice or obligation. Pictures, photographs, colors, features, and sizes are for illustration purposes only and will vary from the homes as built. Square footage dimensions are approximate. Buyer should conduct his or her own investigation of the present and future availability of school district and school assignments. D.R. Horton has no control or responsibility for any changes to school districts or school assignments should they occur in the future.

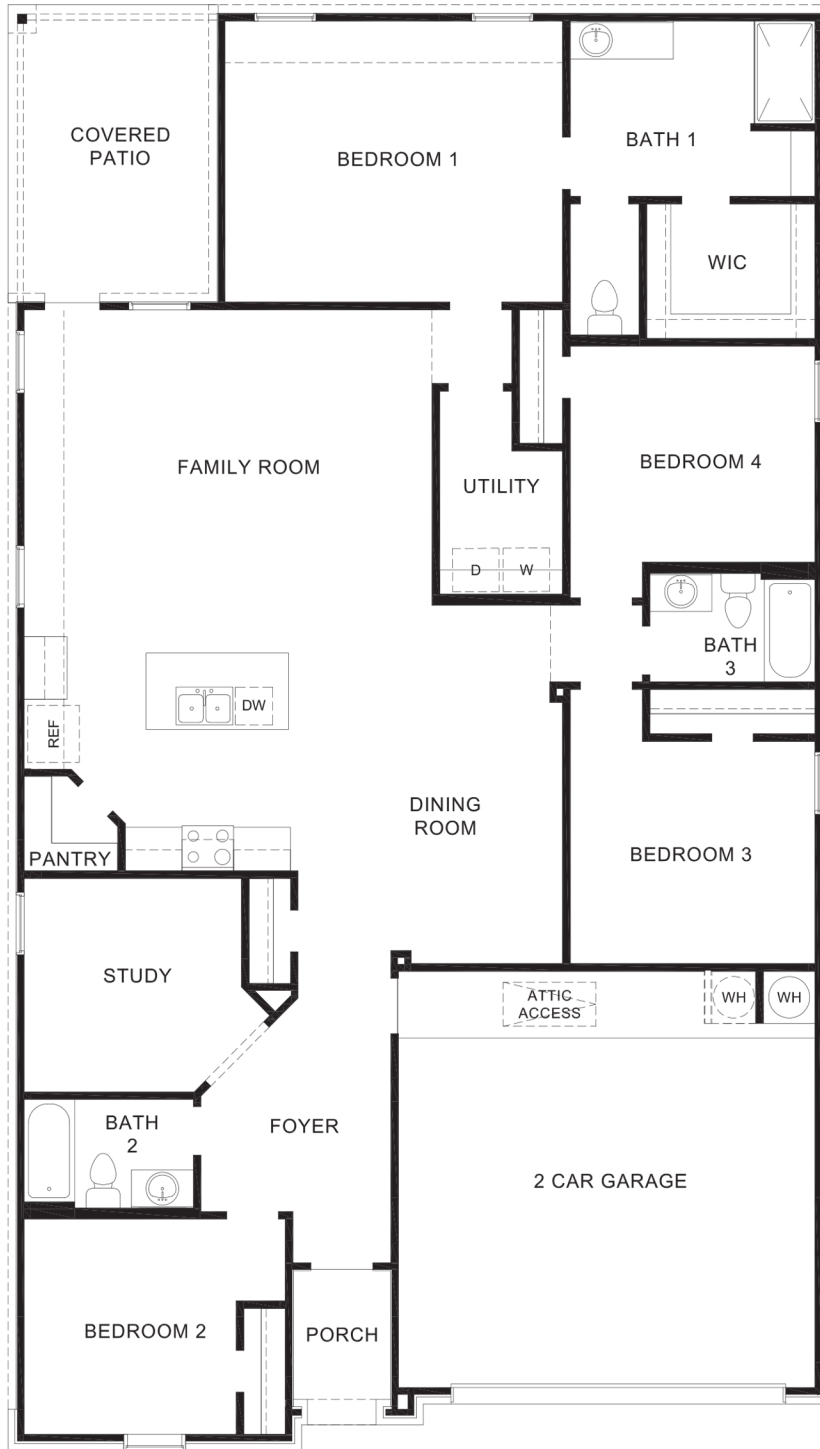




Elevation F/S



Elevation F/S w/ Optional Brick



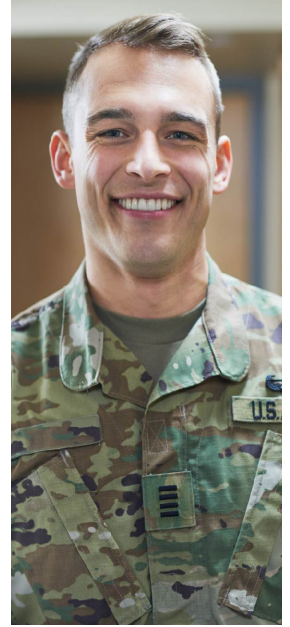
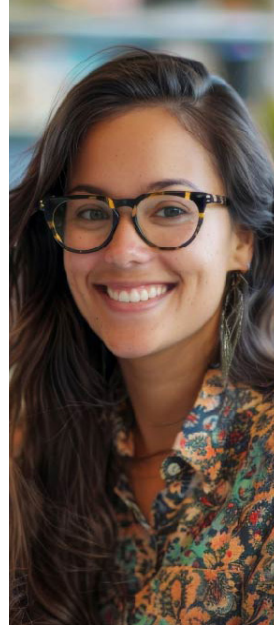
FIRST FLOOR PLAN

Home and community information, including pricing, included features, terms, availability and amenities, are subject to change and prior sale at any time without notice or obligation. Pictures, photographs, colors, features, and sizes are for illustration purposes only and will vary from the homes as built. Square footage dimensions are approximate. Buyer should conduct his or her own investigation of the present and future availability of school district and school assignments. D.R. Horton has no control or responsibility for any changes to school districts or school assignments should they occur in the future.



D·R·HORTON®

America's Builder



the home of the brave

The pride of our country is those who step up. You do what is asked, and even what isn't, all for the fulfillment of your community. You serve those around you, and we want to give back. Military, law enforcement, firefighters, healthcare professionals, and educators can receive up to \$1,000 toward closing costs or up to \$1,000 toward design options for a new home purchase in one of our Oklahoma City communities.

We're including up to

\$1,000

toward closing costs
OR design options
with a new home purchase

View our communities today!
www.DRHorton.com/Oklahoma/Oklahoma-City

The Home of the Brave program is available at all Oklahoma City Division communities to individuals currently employed as military personnel, law enforcement personnel, firefighters, healthcare professionals and educators. Program includes up to \$1,000 in closing costs (available with the use of any lender) or up to \$1,000 toward design options with a new home purchase. Program incentives, when combined with any other incentives being offered by seller, may not exceed loan program limitations. Not redeemable for cash. Any unused incentive will be forfeited. Limit of one Home of the Brave incentive per home. Availability of upgrades subject to stage of completion. Design options must be installed prior to closing. Buyer must contract between 10/01/24 – 12/31/24 to receive the incentive and present proof of employment (such as a pay stub or military ID card) at time of contract execution. This promotion must be presented at the time of contract and prior to contract acceptance. Offer valid only for new contracts and does not apply to transfers, cancellations or re-writes. Program subject to cancellation or change without notice or obligation. See sales agent for complete details. Financing offered by DHI Mortgage Company, Ltd. Branch NMLS# 582772, 15509 N May Ave., Edmond, OK 73013. Company NMLS#14622. DHIM is an affiliate of D.R. Horton homes. For more information about DHIM and its licensing please visit <http://www.dhimortgage.com/affiliate/>. Provided for informational purposes only. This is not a commitment to lend; not all buyers will qualify. Equal Housing Opportunity. Expiration 12/31/24.

D·R·HORTON®
America's Builder



America's smart home®

You'll never be too far from home.

Monitor and control your home from your couch or from 500 miles away. Connect to your home with your smartphone, tablet or computer.

Homelife can be hands-free.

It's never been easier to settle into a new routine. Set the scene with your voice, from your phone, through the Qolsys panel, or set it and forget it.

Connect and build onto your system.

Our homes speak Bluetooth, Wi-Fi, Z-Wave and cellular devices so you can sync with almost any smart device on the market.



**See what's behind the door
of your new smart home.**

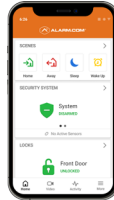
D.R. Horton is an Equal Housing Opportunity Builder.

What's included.



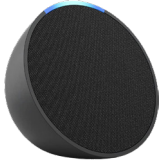
Qolsys IQ Panel

The Qolsys panel is the central hub that talks to all the devices of your smart home. This panel bridges the suite of products with Bluetooth capability, Wi-Fi integration, Z-Wave access, and cellular connectivity.



Alarm.com App

Alarm.com is the heartbeat of the entire smart home system. This simple, one app solution brings our system together, so no matter where you are, your home is at your fingertips.



Amazon Echo Pop

Control your home with your voice and experience hands-free convenience with the Amazon Echo Pop. Just ask Alexa to play music, change your home's temperature, and more.



Kwikset HomeConnect™ 620

Control your door even if you're not home. Lock and unlock your front door by entering your key code or through your smart device.



Alarm.com Video Doorbell

Greet your guests from your smart phone. The smart doorbell connected to your Alarm.com app that allows you to see, hear and talk to whoever comes to your door.



Deako Smart Switch

Bring your home to life in the evenings. If you're on the go or on the couch, the Smart Switch can be turned on with your voice or smartphone.



Honeywell T6 Pro Z-Wave Thermostat

Set the perfect temperature before you get home. The Honeywell thermostat lets you cool or heat your home using your smartphone, Qolsys panel, voice, or the thermostat itself.

D.R. Horton is an Equal Housing Opportunity Builder. A D.R. Horton Smart Home is equipped with technology that includes the following: a Z-Wave programmable thermostat manufactured by Honeywell; a Z-Wave door lock manufactured by Kwikset; a Smart Switch; a Qolsys, Inc. touchscreen Smart Home control device; an automation platform from Alarm.com; an Alarm.com video doorbell; an Amazon Echo Pop. D.R. Horton reserves the right, without prior notice, to substitute other products for those listed above. Other Smart Home technology features may be offered for an additional charge. For Smart Home technology included in the home to work, homeowners must obtain and pay for their own Internet service and may need to purchase compatible devices and to maintain accounts with third parties for the services. D.R. Horton makes no representation or warranty that any or all of the Smart Home technology is secure, will meet any homeowner needs or will provide any level of physical or cyber security for the home – even if the technology is working as intended. All photos and drawings are for illustration purposes only. See a D.R. Horton sales agent for complete information. D.R. Horton is a registered trademark of D.R. Horton Management Company, Ltd. All other trademarks shown are the property of their respective owners. Amazon, Echo, Alexa, and all related logos are trademarks of Amazon.com, Inc. or its affiliates.



WHY DHI MORTGAGE?

We're more than financing! Like with any relationship, you should choose a lender who understands and cares about you. That's why we do what we do. Our goal is to get you into your new home so you can start making a lifetime of memories. And we want to make the process as simple as possible.

HOW DO WE DO IT?

AFFILIATION WITH AMERICA'S BUILDER, D.R. HORTON

As a valued D.R. Horton customer, you may be eligible to receive additional savings and benefits when you choose us.

COMPETITIVE INTEREST RATES & DIVERSE LOAN OPTIONS

Not only a front loader fee and the best loan product for your specific financial situation.

CONVENIENT ONLINE PORTAL

Our streamlined, mobile-friendly portal makes your loan process simple.

IN-HOUSE LOAN PROCESSING, UNDERWRITING, & CLOSING

You'll work with one loan processor and one Mortgage Loan Originator. We handle the entire loan in-house and are happy to meet with you in person.

CONSTANT COMMUNICATION

We have an established relationship with the builder and remain in constant contact with them and with you. Which means there are no surprises.

SPECIALIZED KNOWLEDGE

We specialize in efficient mortgage financing and have handled all types of loans and borrowers.

HIGH LEVEL OF CUSTOMER SATISFACTION

And you don't have to take our word for it. Our customer surveys consistently give us A's in customer satisfaction.

EDUCATION & ASSISTANCE FOR CREDIT-CHALLENGED BUYERS

Less-than-perfect credit? Not a deal-breaker. Our DHI Mortgage Home Buyers Club^{®2} can analyze your situation and guide you toward improving your credit profile in preparation for successful homeownership.

Get started today!

Go to dhimortgage.com/amber-lance and click "Get Started."



Amber Lance

Mortgage Loan Originator, NMLS #224081
15509 N. May Ave., Edmond, OK 73013
405-928-6200 *direct* | 405-219-7735 *cell*
ANLance@dhimortgage.com
dhimortgage.com/amber-lance

Financing offered by DHI Mortgage Company, Ltd. Limited Partnership (DHIM). Branch NMLS #582772. 15509 N. May Ave., Edmond, OK 73013. Company NMLS #14622. DHIM is an affiliate of D.R. Horton. For more information about DHIM and its licensing please visit www.dhimortgage.com/affiliate. Provided for informational purposes only. This is not a commitment to lend. Not all borrowers will qualify. 1Borrower may be required to pay a fee if they choose to lock in an extended rate. 2The DHI Mortgage Home Buyers Club does not guarantee to raise the credit score or guarantee loan approval. Credit education offered by the DHI Mortgage Home Buyers Club does not assure participants that they will qualify for, or successfully obtain, a home mortgage loan. Participants are not required to finance their home purchase through DHIM or to purchase a home from DHIM's affiliated builder, D.R. Horton, to enroll in the DHI Mortgage Home Buyers Club. Participants must complete a HUD approved homebuyer's education course at their own cost as a prerequisite to participation in the DHI Mortgage Home Buyers Club. DHI Mortgage Home Buyers Club is not a credit counseling or credit repair organization. See your DHI Mortgage Home Buyers Club Credit Consultant for full details. Equal Housing Opportunity. HUD = U.S. Department of Housing and Urban Development. REV:06/03/25|EXP:06/03/26



Lighten the Load with **CLOSING COST ASSISTANCE**

when you finance
with DHI Mortgage!

Life can get pretty busy. Wouldn't it be great to take some of that load off your plate - and your budget? Get **up to \$5,000 toward closing costs** when you buy a new D.R.

Horton home!

Closing Costs May Include:

- Origination charge
- Appraisal fee
- Processing fee
- Closing fee
- Commitment fee
- Name search/title exam fee
- Recording fee
- State tax fee
- Title insurance fee



You'll want to take advantage of big savings like this! Get started today!
Go to dhimortgage.com/amber-lance and click "Get Started."



Amber Lance

Mortgage Loan Originator, NMLS #224081
15509 N. May Ave., Edmond, OK 73013
405-928-6200 *direct* | 405-219-7735 *cell*
ANLance@dhimortgage.com
dhimortgage.com/amber-lance

Financing offered by DHI Mortgage Company, Ltd. Limited Partnership (DHIM). Branch NMLS #582772. 15509 N. May Ave., Edmond, OK 73013. Company NMLS #14622. DHIM is an affiliate of D.R. Horton. For more information about DHIM and its licensing please visit www.dhimortgage.com/affiliate. Provided for informational purposes only. This is not a commitment to lend. Not all borrowers will qualify. If buyer funds and closes with seller's affiliated lender OR another seller ?Preferred Lender,? seller shall pay buyer's closing costs in accordance with the amount disclosed above in the advertisement body. Buyer is not required to finance through DHIM or another seller ?Preferred Lender? to purchase a home; however, buyer must use DHIM or another seller ?Preferred Lender? to receive the incentive. Some restrictions apply. See sales agent for complete details including a list of all seller ?Preferred Lenders.? Closing cost incentives tied to the use of DHIM will vary by community. See sales agent for additional details. Equal Housing Opportunity. REV:06/03/25 | EXP:09/03/25



THE DHI MORTGAGE HOME BUYERS CLUB HELPED CLOSE 2,620 LOANS IN FISCAL YEAR 2024!

What can we do for you?



If you have potential buyers who can't currently qualify for a mortgage because of their credit rating, refer them to the DHI Mortgage Home Buyers Club®! The DHI Mortgage Home Buyers Club is a complimentary (third-party homebuyer education necessary) program that works with credit-challenged buyers to prepare them for successful homeownership - and all the possibilities that come with improved credit.

Since our inception in 2008, we've helped **32,365** buyers gain a better understanding of credit and close on a home - including **2,620** in our last fiscal year alone! Improved credit ratings for them means more sales for you.

The DHI Mortgage Home Buyers Club has tools that can:

- Give your buyers more purchasing power: an improved credit profile could mean more upgrades or a bigger house
- Provide an additional level of customer service to your buyers
- Offer options for potential buyers even if they've been declined by another lender
- Teach your buyers how to maintain creditworthiness for their financial future
- Offer a path to homeownership for credit-challenged buyers

Contact your DHI Mortgage Loan Originator or DHI Mortgage Home Buyers Club for more information.



Amber Lance

Mortgage Loan Originator, NMLS #224081
15509 N. May Ave., Edmond, OK 73013
405-928-6200 *direct* | 405-219-7735 *cell*
ANLance@dhimortgage.com
dhimortgage.com/amber-lance

Financing offered by DHI Mortgage Company, Ltd. Limited Partnership (DHIM). Branch NMLS #582772. 15509 N. May Ave., Edmond, OK 73013. Company NMLS #14622. DHIM is an affiliate of D.R. Horton. For more information about DHIM and its licensing please visit www.dhimortgage.com/affiliate. Provided for informational purposes only. This is not a commitment to lend. Not all borrowers will qualify. The DHI Mortgage Home Buyers Club does not guarantee to raise the credit score or guarantee loan approval. Credit education offered by the DHI Mortgage Home Buyers Club does not assure participants that they will qualify for, or successfully obtain, a home mortgage loan. Participants are not required to finance their home purchase through DHIM or to purchase a home from DHIM's affiliated builder, D.R. Horton, to enroll in the DHI Mortgage Home Buyers Club. Participants must complete a HUD approved homebuyer's education course at their own cost as a prerequisite to participation in the DHI Mortgage Home Buyers Club. DHI Mortgage Home Buyers Club is not a credit counseling or credit repair organization. See your DHI Mortgage Home Buyers Club Credit Consultant for full details. Equal Housing Opportunity. HUD = U.S. Department of Housing and Urban Development. REV: 06/03/25 | EXP: 06/03/26



Enroll in the DHIMORTGAGE HOME BUYERS CLUB TODAY

You could be on your way to achieving your dream of homeownership!



WHAT IS THE DHI MORTGAGE HOME BUYERS CLUB?

The DHI Mortgage Home Buyers Club® is a complimentary (third-party homebuyer education necessary) program that works with credit-challenged buyers and buyers who simply would like an improved credit profile to prepare them for successful homeownership. In fact, thanks to the DHI Mortgage Home Buyers Club, we've closed more than **32,365** loans since 2008, which includes **2,620** buyers who successfully completed the program in FY 2024.

THE DHI MORTGAGE HOME BUYERS CLUB HAS TOOLS THAT CAN:

- Give you more purchasing power: an improved credit profile could mean more upgrades or a bigger house
- Provide an additional level of customer service
- Offer options even if you've been declined by another lender
- Teach you how to maintain creditworthiness for your financial future
- Offer a path to homeownership

Fill out your forms today and complete your enrollment steps to get started!



Amber Lance

Mortgage Loan Originator, NMLS #224081
15509 N. May Ave., Edmond, OK 73013
405-928-6200 *direct* | 405-219-7735 *cell*
ANLance@dhimortgage.com
dhimortgage.com/amber-lance

Financing offered by DHI Mortgage Company, Ltd. Limited Partnership (DHIM). Branch NMLS #582772. 15509 N. May Ave., Edmond, OK 73013. Company NMLS #14622. DHIM is an affiliate of D.R. Horton. For more information about DHIM and its licensing please visit www.dhimortgage.com/affiliate. Provided for informational purposes only. This is not a commitment to lend. Not all borrowers will qualify. 1The DHI Mortgage Home Buyers Club does not guarantee to raise the credit score or guarantee loan approval. Credit education offered by the DHI Mortgage Home Buyers Club does not assure participants that they will qualify for, or successfully obtain, a home mortgage loan. Participants are not required to finance their home purchase through DHIM or to purchase a home from DHIM's affiliated builder, D.R. Horton, to enroll in the DHI Mortgage Home Buyers Club. Participants must complete a HUD approved homebuyer's education course at their own cost as a prerequisite to participation in the DHI Mortgage Home Buyers Club. DHI Mortgage Home Buyers Club is not a credit counseling or credit repair organization. See your DHI Mortgage Home Buyers Club Credit Consultant for full details. Equal Housing Opportunity. HUD = U.S. Department of Housing and Urban Development. REV: 06/03/25 | EXP: 06/03/26



At A Glance

We operate in 45 of homebuilding's top 50 markets in the U.S.



D.R. Horton's homebuilding operating segments are aggregated into six reporting segments. The reporting segments and the states in which the Company has homebuilding operations are as follows:

- NORTHWEST:**
Colorado, Oregon, Utah, Washington
- SOUTHWEST:**
Arizona, California, Hawaii, Nevada, New Mexico
- SOUTH CENTRAL:**
Arkansas, Oklahoma, Texas
- SOUTHEAST:**
Alabama, Florida, Louisiana, Mississippi
- EAST:**
Georgia, North Carolina, South Carolina, Tennessee
- NORTH:**
Delaware, Illinois, Indiana, Iowa, Kentucky, Maryland, Minnesota, Nebraska, New Jersey, Ohio, Pennsylvania, Virginia, West Virginia

106 Markets
33 States
13,237 Employees

 FOUNDED 1978 44 years in business	 DELIVERED 950K homes since our inception in 1978	 CLOSED 82,744 homes at an average sale price of \$385,100 in FY2022	 % FIRST TIME HOME BUYERS 56% who used DHI Mortgage in FY2022
--	---	--	---



Home

We're building every day.

From our first home in 1978 to over 1,000,000 homes in 2023, our mission remains the same – to deliver quality and affordability across the country.

Since 2002, more people have chosen D.R. Horton than any other builder. Buy or rent, we have homes and services to provide a home for every stage in life.

Together, we are America's Builder.